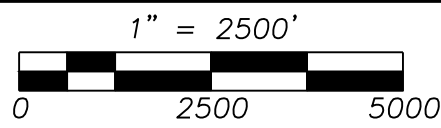


CABLE LENGTHS

SEGMENT	3D DISTANCE	2D PLAN DISTANCE
SUBMARINE CABLE DISTANCE HDD ENTRY POINT TO ENTRY POINT	32,250 LF	32,128 LF
HAT ISLAND HDD VAULT TO HDD ENTRY POINT	472 LF	464 LF
PORT OF EVERETT HDD VAULT TO HDD ENTRY POINT	973LF	958LF



GENERAL PROJECT AREA
SCALE: 1"=2500'

GENERAL PROJECT DESCRIPTION

SNOHOMISH COUNTY PUBLIC UTILITY DISTRICT NO. 1 PROPOSES INSTALLATION OF A NEW SUB-SEA POWER CABLE . THE CABLE SPANS FROM UPLAND OF PORT OF EVERETT OWNERSHIP ACROSS POSSESSION SOUND APPROXIMATELY 6.3 MILES TO AN EXISTING POWER CONNECTION NEAR THE MARINA AT HAT ISLAND. BOTH LANDWARD ENTRY/EXIT POINTS WILL EMPLOY HORIZONTAL DIRECTIONAL DRILLING (HDD) AS SHOWN ON ATTACHED PROFILE SHEETS.

DATUM AND TIDAL INFORMATION

1. BASIS OF BEARINGS FOR THIS PROJECT IS GRID NORTH, WASHINGTON COORDINATE SYSTEM NORTH ZONE NAD 83 (2011): BASED ON GLOBAL NAVIGATION SATELLITE SYSTEM (GNSS) OBSERVATIONS.
2. VERTICAL DATUM IS MEAN LOWER LOW WATER (MLLW), NOAA STATION 9447659 EVERETT, WA EPOCH 1983-2001. TIDAL DATUMS AND SUBSEQUENT CONVERSIONS ARE AS FOLLOWS:

DATUM	ELEVATION
MEAN LOWER LOW WATER (MLLW)	0.00
NAVD88	2.03
MEAN LOW WATER (MLW)	2.80
MEAN HIGH WATER (MHW)	10.21
MEAN HIGHER HIGH WATER (MHHW)	11.09

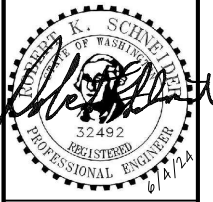
3. EXTREME LOW TIDE (ELT) AS SHOWN HEREON, AND AS DEFINED BY PUBLISHED DNR GUIDANCE MEANS THE LINE AS ESTIMATED BY THE FEDERAL GOVERNMENT BELOW WHICH IT MIGHT REASONABLY BE EXPECTED THAT THE TIDE WOULD NOT EBB. IN THE PUGET SOUND AREA OF WASHINGTON STATE, THIS LINE IS ESTIMATED BY THE FEDERAL GOVERNMENT TO BE A POINT IN ELEVATION 4.50 FEET (PLUS OR MINUS 0.5 FEET) BELOW THE DATUM PLANE OF MEAN LOWER LOW WATER, (0.0).
4. ALL DISTANCES AND ELEVATIONS SHOWN HEREON ARE IN FEET AND DECIMALS THEREOF.
5. TERRESTRIAL AREAS OF HAT ISLAND WERE SURVEYED AND MAPPED BY HARMSSEN LLC IN DECEMBER AND JANUARY OF 2019.
6. BATHYMETRIC INFORMATION PROVIDED BY TETRATECH BATHYMETRIC SURVEY CONDUCTED BETWEEN AUGUST 8 AND SEPTEMBER 15, 2022.
7. SNOHOMISH WATERSHED KELP AND EEL GRASS PROTECTION ZONE SHOWN AS DESCRIBED ON DNR COMMISSIONER OF PUBLIC LAND'S ORDER NUMBER 202201, SIGNED MARCH 16, 2022.
8. ANCHOR AREA PLOTTED PER COORDINATES PROVIDED BY CFR 110.230 (5) PORT GARDNER GENERAL ANCHORAGE.

SHEET INDEX

SHEET	TITLE
P1	COVER SHEET
P2	HAT ISLAND PLAN AND PROFILE
P3	PORT OF EVERETT PLAN AND PROFILE
P4	SUB-SEA CABLE PLAN AND PROFILE
P5	SUB-SEA CABLE PLAN AND PROFILE
P6	PORT OF EVERETT DETAIL AREA
P7	HAT ISLAND DETAIL AREA
P8	LEGEND AND ABBREVIATIONS

WO	100045299
TASK	
SCALE	1"=2000'
DFTR	JTF
CHKR	EAS
ENGR	RKS
APVD	
DATE	6/4/2024

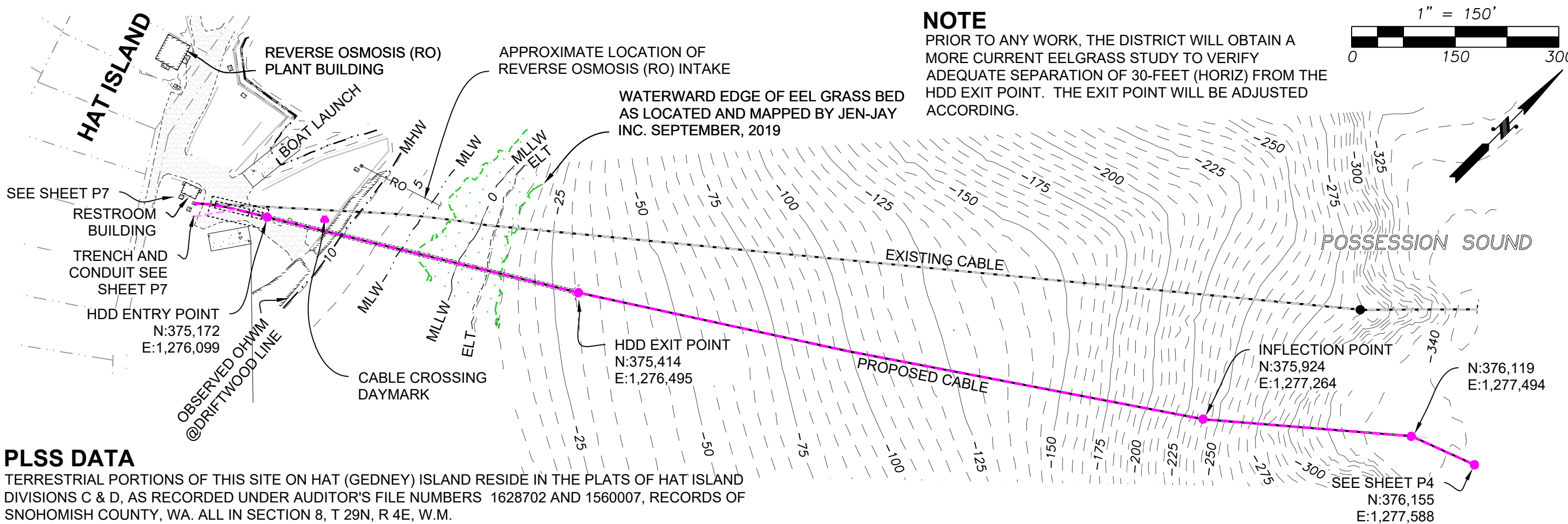
DATE	REVISIONS



DRITTLE & ASSOCIATES, INC.
Engineers and Consultants
7515 WEST DESCHUTES AVENUE
KENNEWICK, WA 99338
(509) 735-5350

**HAT ISLAND TO PORT OF EVERETT
CABLE CROSSING
PERMIT SET
COVER SHEET**

REV	DRAWING
0	P1

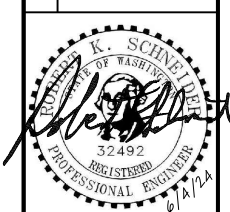


PLSS DATA

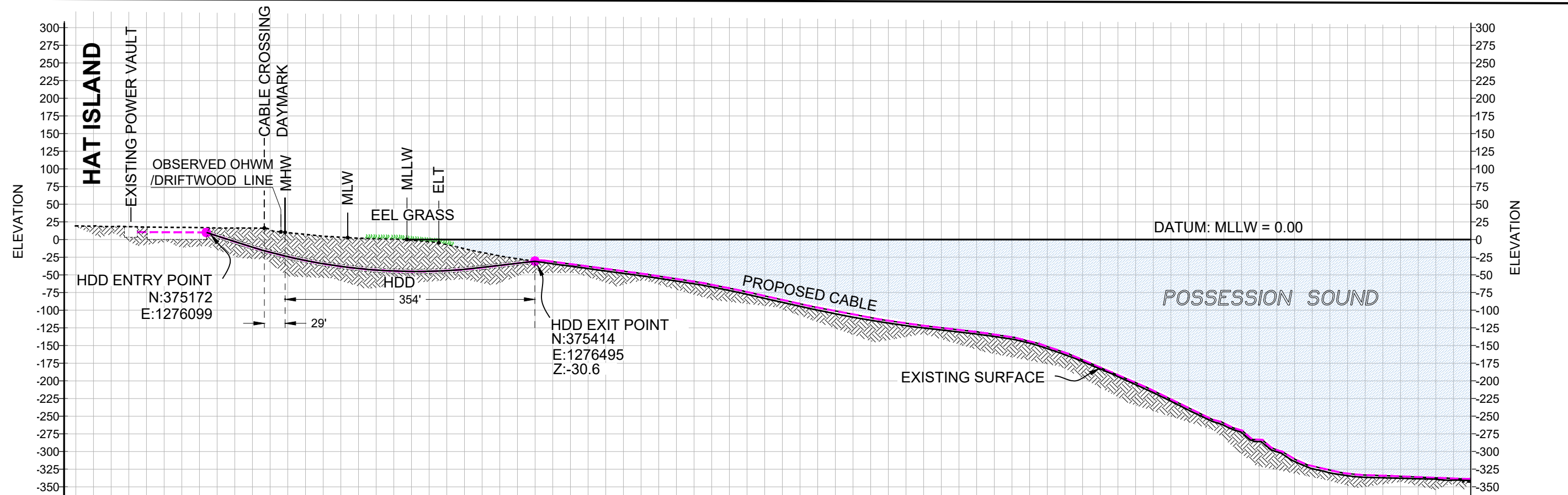
TERRESTRIAL PORTIONS OF THIS SITE ON HAT (GEDNEY) ISLAND RESIDE IN THE PLATS OF HAT ISLAND DIVISIONS C & D, AS RECORDED UNDER AUDITOR'S FILE NUMBERS 1628702 AND 1560007, RECORDS OF SNOHOMISH COUNTY, WA. ALL IN SECTION 8, T 29N, R 4E, W.M.

SNOHOMISH COUNTY	
PUD	
PUBLIC UTILITY DISTRICT NO. 1	
WO	100045299
TASK	
SCALE	1"=150'
DFTR	JTF
CHKR	EAS
ENGR	RKS
APVD	
DATE	6/4/2024

DATE	
REVISIONS	



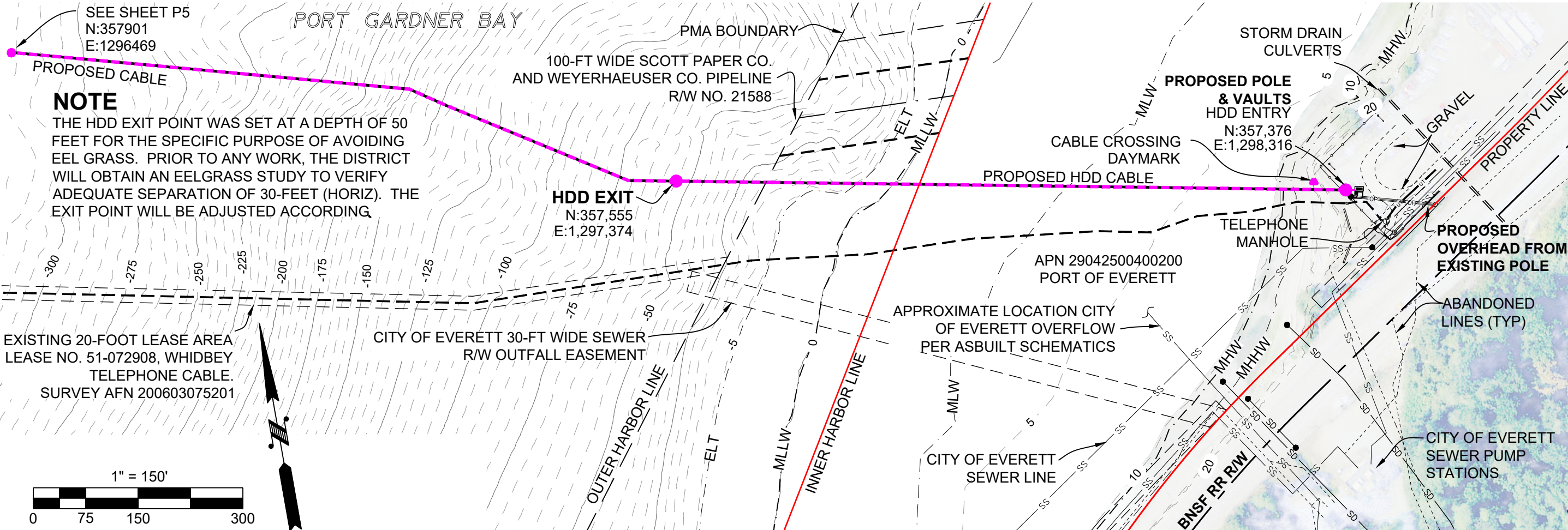
HITTLE & ASSOCIATES, INC.
Engineers and Consultants
7515 WEST DESCHUTES AVENUE
KENNEWICK, WA 98336
(509) 735-5350



CABLE PROFILE
SCALE 1"=150 HORIZONTAL/VERTICAL

HAT ISLAND TO PORT OF EVERETT
CABLE CROSSING
PERMIT SET
HAT ISLAND PLAN & PROFILE

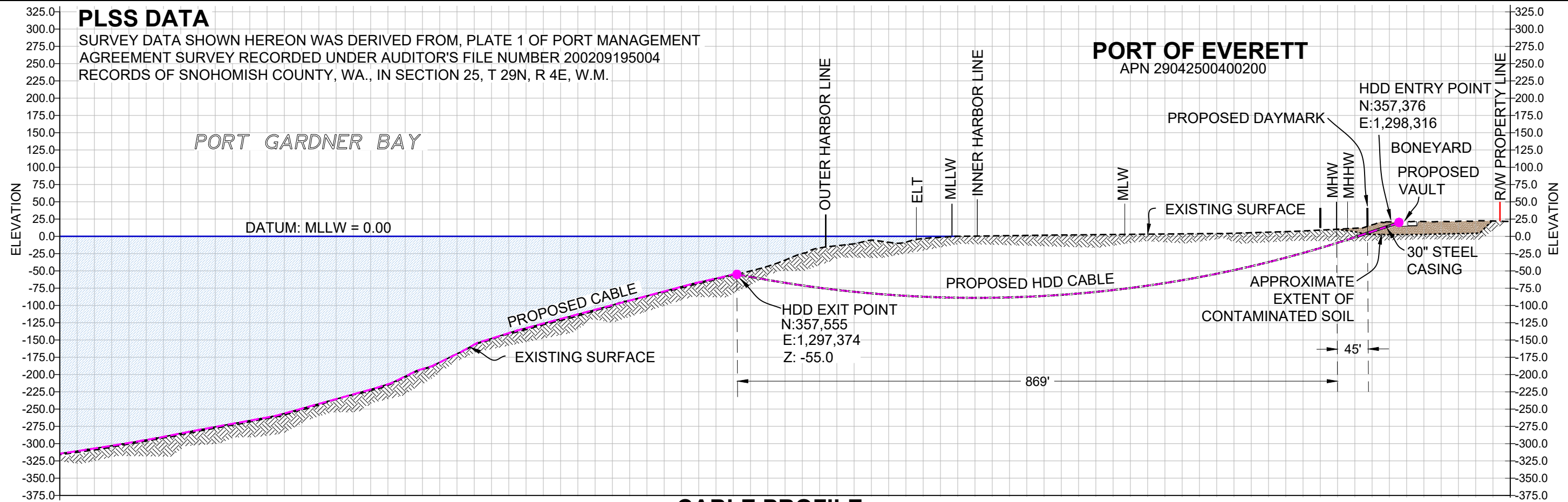
REV	DRAWING
0	P2



SNOHOMISH COUNTY PUD PUBLIC UTILITY DISTRICT NO. 1	
WO	100045299
TASK	
SCALE	1"=150'
DFTR	JTF
CHKR	EAS
ENGR	RKS
APVD	
DATE	6/4/2024

REVISIONS

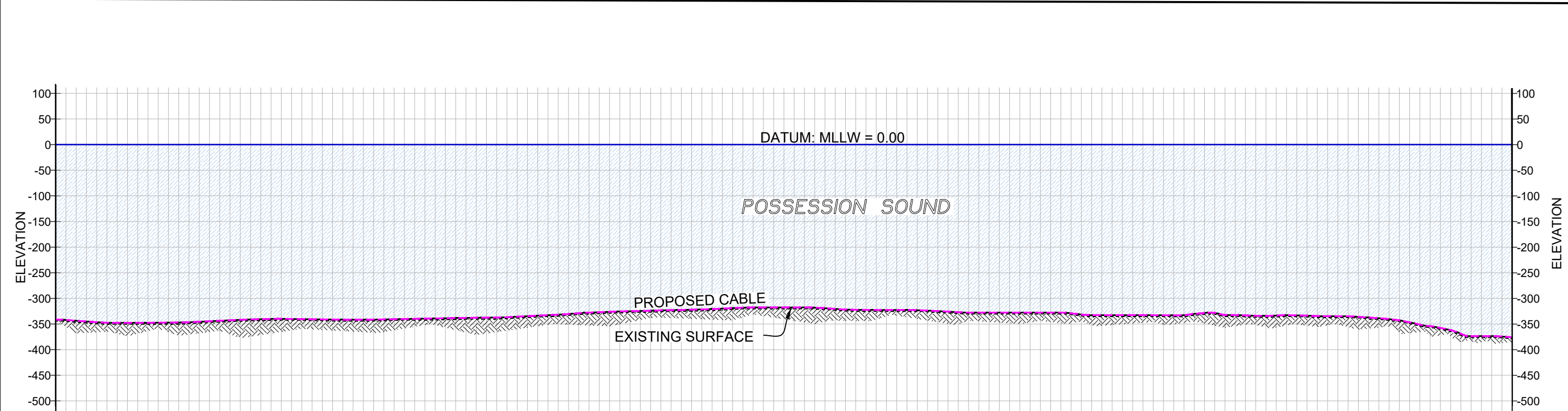
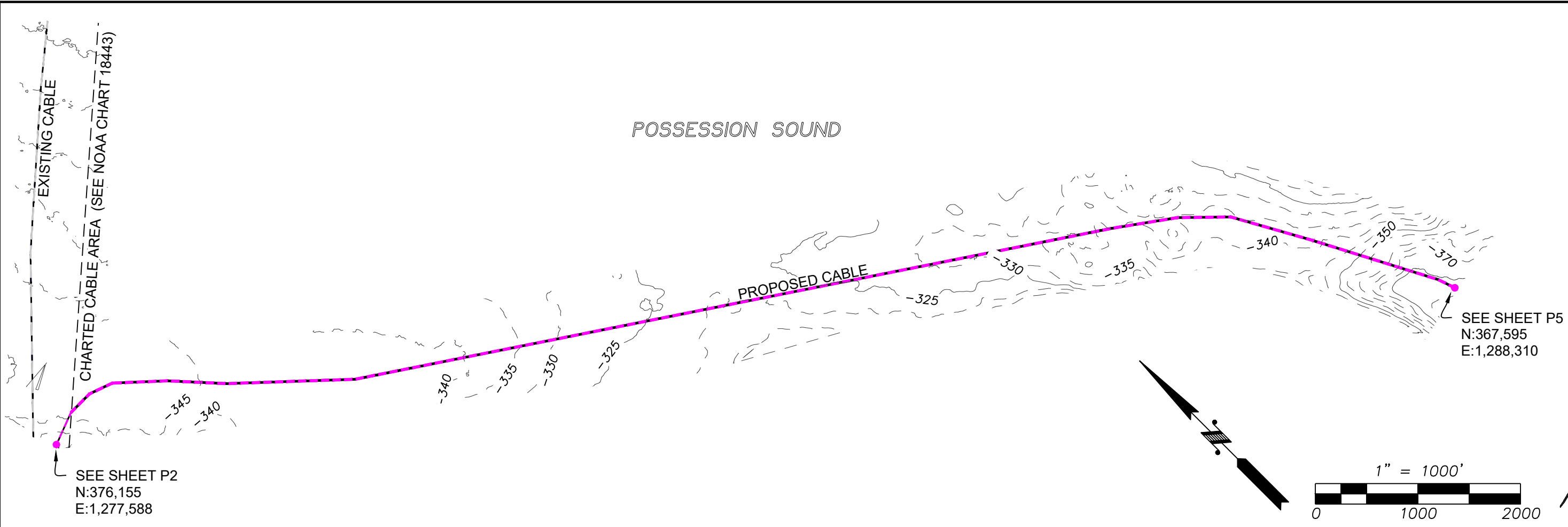
DRITTLE & ASSOCIATES, INC.
 Engineers and Consultants
 7515 WEST DESCHUTES AVENUE
 KENNEWICK, WA 98336
 (509) 735-5350



HAT ISLAND TO PORT OF EVERETT
 CABLE CROSSING
 PERMIT SET
 PORT OF EVERETT PLAN & PROFILE

REV	DRAWING
0	P3

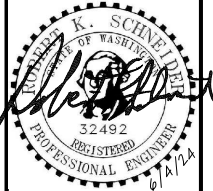
CABLE PROFILE
 SCALE 1"=150 HORIZONTAL/VERTICAL



SUB-SEA CABLE PROFILE
 SCALE 1"=1000' HORIZONTAL / 1"=200' VERTICAL

SNOHOMISH COUNTY	
PUD	
PUBLIC UTILITY DISTRICT NO. 1	
WO	100045299
TASK	
SCALE	1"=150'
DFTR	JTF
CHKR	EAS
ENGR	RKS
APVD	
DATE	6/4/2024

DATE	
REVISIONS	



HITTLE & ASSOCIATES, INC.
 Engineers and Consultants
 7515 WEST DESCHUTES AVENUE
 KENNEWICK, WA 98336
 (509) 735-5350

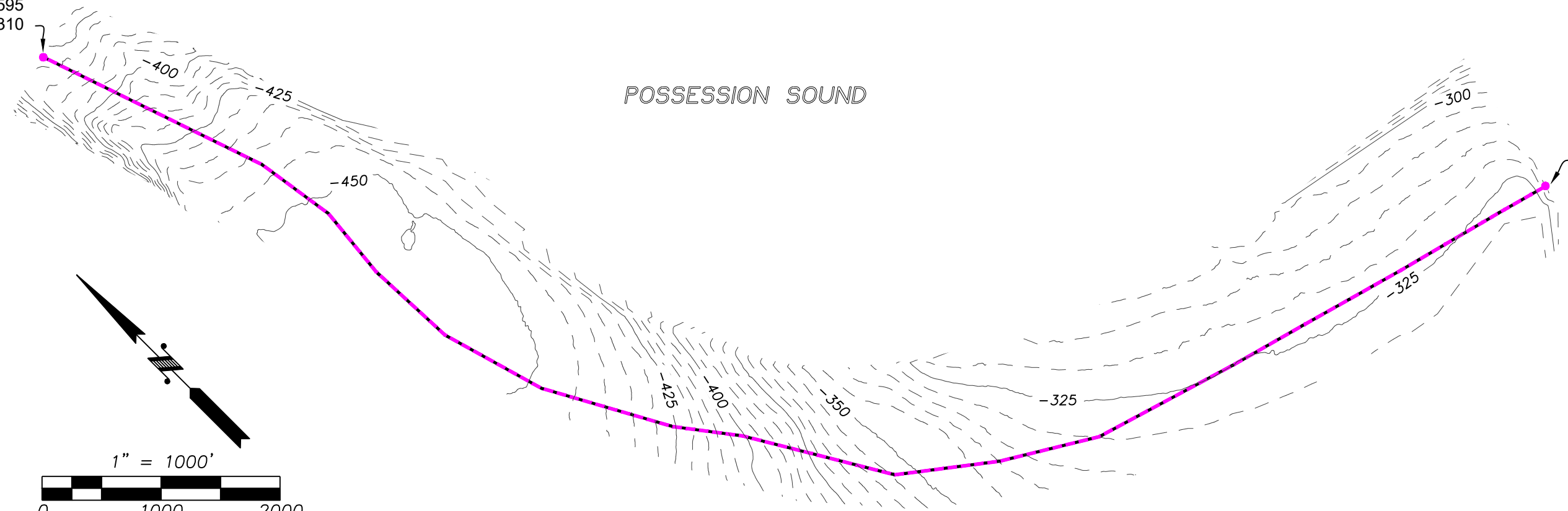
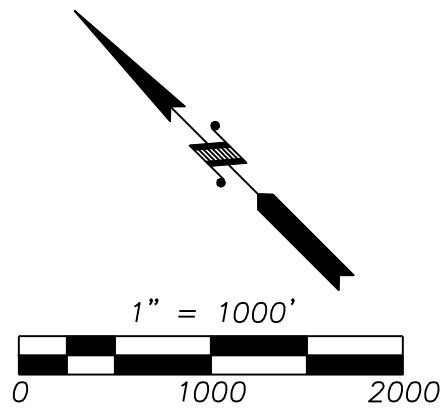
HAT ISLAND TO PORT OF EVERETT
 CABLE CROSSING
 PERMIT SET
 SUB-SEA CABLE PLAN & PROFILE

REV	DRAWING
0	P4

SEE SHEET P4
N:367,595
E:1,288,310

SEE SHEET P3
N:357901
E:1296469

POSSESSION SOUND

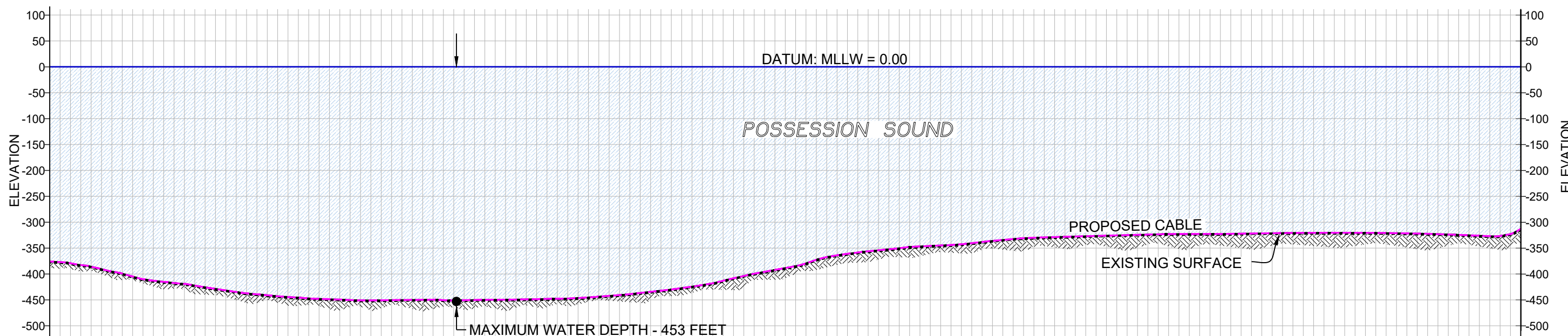


SNOHOMISH COUNTY PUD PUBLIC UTILITY DISTRICT NO. 1	
WO	100045299
TASK	
SCALE	1"=150'
DFTR	JTF
CHKR	EAS
ENGR	RKS
APVD	
DATE	6/4/2024

DATE	
REVISIONS	



HITTLE & ASSOCIATES, INC.
Engineers and Consultants
7515 WEST DESCHUTES AVENUE
KENNEWICK, WA 98336
(509) 735-5350



SUB-SEA CABLE PROFILE
SCALE 1"=1000' HORIZONTAL / 1"=200' VERTICAL

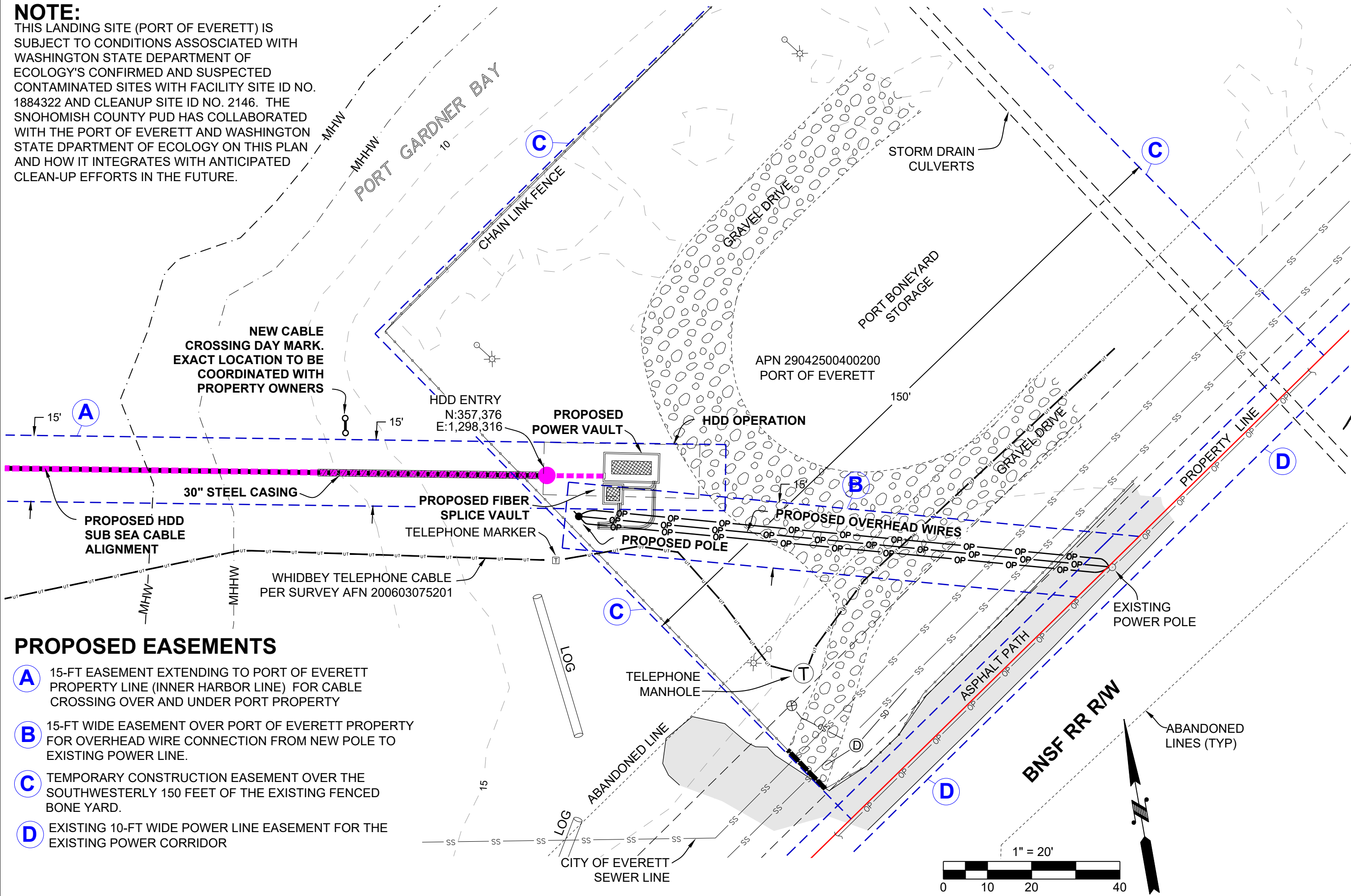
HAT ISLAND TO PORT OF EVERETT
CABLE CROSSING
PERMIT SET
SUB-SEA CABLE PLAN & PROFILE

REV	DRAWING
0	P5

NOTE:

THIS LANDING SITE (PORT OF EVERETT) IS SUBJECT TO CONDITIONS ASSOCIATED WITH WASHINGTON STATE DEPARTMENT OF ECOLOGY'S CONFIRMED AND SUSPECTED CONTAMINATED SITES WITH FACILITY SITE ID NO. 1884322 AND CLEANUP SITE ID NO. 2146. THE SNOHOMISH COUNTY PUD HAS COLLABORATED WITH THE PORT OF EVERETT AND WASHINGTON STATE DEPARTMENT OF ECOLOGY ON THIS PLAN AND HOW IT INTEGRATES WITH ANTICIPATED CLEAN-UP EFFORTS IN THE FUTURE.

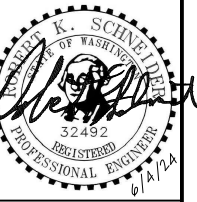
SNOHOMISH COUNTY PUD PUBLIC UTILITY DISTRICT NO. 1	
WO	100045299
TASK	
SCALE	1"=20'
DFTR	JTF
CHKR	EAS
ENGR	RKS
APVD	
DATE	6/4/2024



PROPOSED EASEMENTS

- A** 15-FT EASEMENT EXTENDING TO PORT OF EVERETT PROPERTY LINE (INNER HARBOR LINE) FOR CABLE CROSSING OVER AND UNDER PORT PROPERTY
- B** 15-FT WIDE EASEMENT OVER PORT OF EVERETT PROPERTY FOR OVERHEAD WIRE CONNECTION FROM NEW POLE TO EXISTING POWER LINE.
- C** TEMPORARY CONSTRUCTION EASEMENT OVER THE SOUTHWESTERLY 150 FEET OF THE EXISTING FENCED BONE YARD.
- D** EXISTING 10-FT WIDE POWER LINE EASEMENT FOR THE EXISTING POWER CORRIDOR

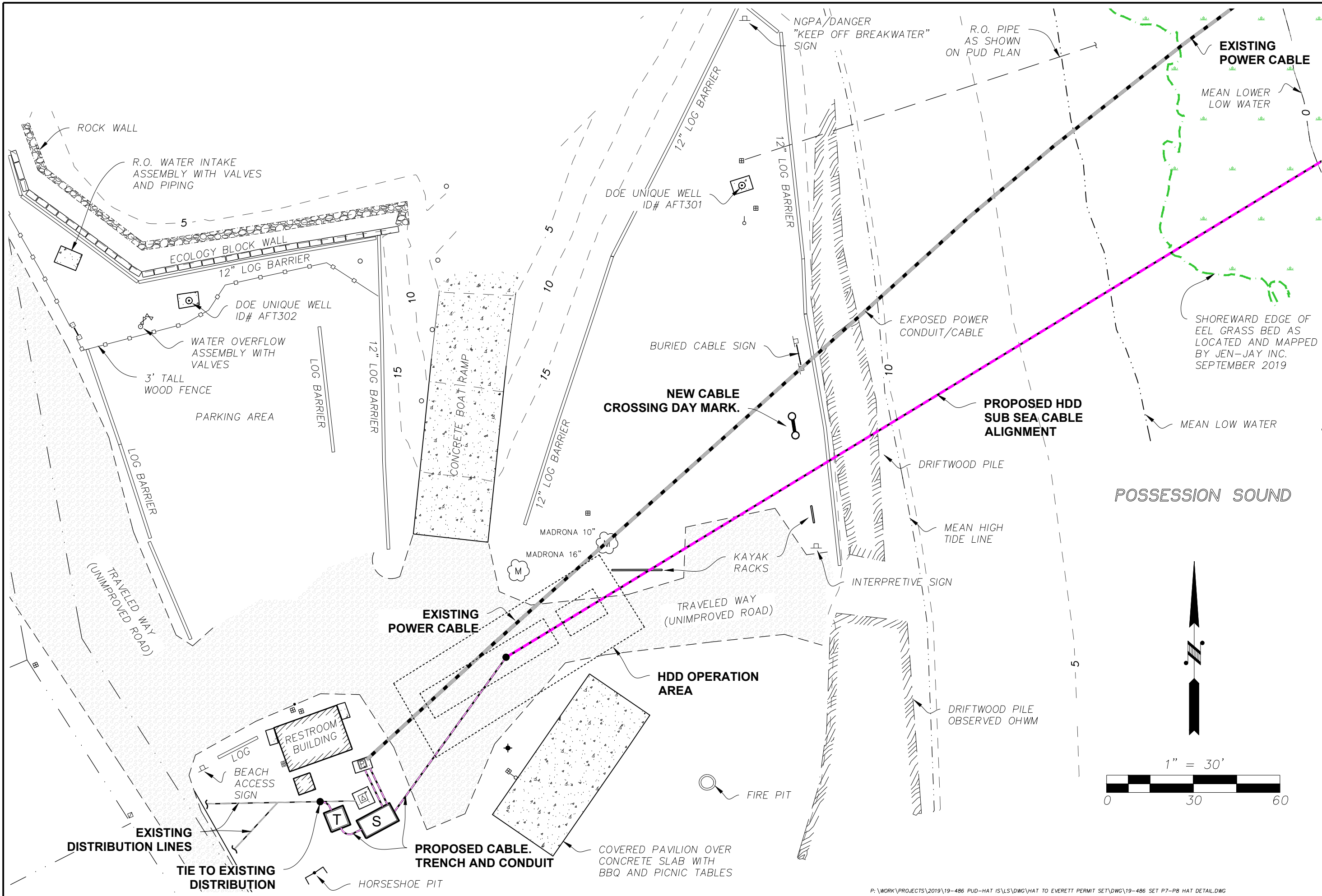
DATE	
REVISIONS	



HITTLE & ASSOCIATES, INC.
Engineers and Consultants
7515 WEST DESCHUTES AVENUE
KENNEWICK, WA 98336
(509) 735-5350

**HAT ISLAND TO PORT OF EVERETT
CABLE CROSSING
PERMIT SET
PORT OF EVERETT DETAIL AREA**

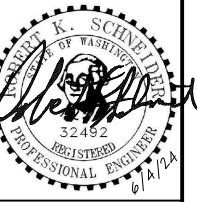
REV	DRAWING
0	P6



SNOHOMISH COUNTY PUD PUBLIC UTILITY DISTRICT NO. 1	
WO	100045299
TASK	
SCALE	1"=30'
DFTR	JTF
CHKR	EAS
ENGR	RKS
APVD	
DATE	6/4/2024
DATE	
REVISIONS	
HAT ISLAND TO MISSION BEACH CABLE CROSSING PERMIT SET HAT ISLAND DETAIL AREA	
REV	DRAWING
0	P7

WO	100045299
TASK	
SCALE	NTS
DFTR	JTF
CHKR	EAS
ENGR	RKS
APVD	
DATE	6/4/2024

DATE	
REVISIONS	



DRITTLE & ASSOCIATES, INC.
Engineers and Consultants
7515 WEST DESCHUTES AVENUE
KENNEWICK, WA 99336
(509) 735-5350

HAT ISLAND TO MISSION BEACH
CABLE CROSSING
PERMIT SET
LEGEND & ABBREVIATIONS

REV	DRAWING
0	P8

LEGEND

EXISTING

- UTILITY POLE ANCHOR
- UTILITY POLE
- TRANSFORMER
- LIGHT POST
- POWER VAULT
- BOLLARD
- POWER METER
- JUNCTION BOX
- PILING
- STORM DRAIN CATCH BASIN
- STORM DRAIN MANHOLE
- AREA DRAIN
- SANITARY SEWER MANHOLE
- WATER METER
- WATER VALVE
- FIRE HYDRANT
- FAUCET
- IRRIGATION VALVE
- WELL HEAD
- MAIL BOX
- TELEPHONE MANHOLE
- TELEPHONE PEDESTAL/MARKER
- ALDER TREE
- CEDAR TREE
- PINE TREE
- DECIDUOUS TREE
- MADRONA TREE
- FLAG POLE
- SIGN
- CULVERT
- GAS LINE
- DITCH CENTERLINE
- STORM DRAIN
- SEWER LINE
- OVERHEAD POWER
- OVERHEAD TELEPHONE
- UNDERGROUND POWER
- UNDERGROUND TELEPHONE
- CHAIN LINK FENCE
- WOOD FENCE
- EXISTING SUB SEA CABLE
- PROPERTY LINE
- PROPOSED EASEMENT LINE

PROPOSED

- NEW HDD CABLE / SUB SEA CABLE
- CABLE AND CONDUIT IN TRENCH
- ELECTRIC TRANSFORMER
- JUNCTION BOX
- ELECTRIC SWITCH GEAR
- CABLE CROSSING DAYMARK
- POWER POLE

ABBREVIATIONS

- AFN - AUDITOR'S FILE NUMBER
- APN - ASSESSOR'S PARCEL NUMBER
- CONC - CONCRETE
- CB - CATCH BASIN
- CL - CENTERLINE
- CMP - CORRUGATED METAL PIPE
- CPP - CORRUGATED PLASTIC PIPE
- CONC - CONCRETE
- DIA - DIAMETER
- ELT - EXTREME LOW TIDE
- ESMT - EASEMENT
- FDC - FIRE DEPARTMENT CONNECTION
- FT - U.S. SURVEY FEET
- G.E. - GRATE ELEVATION
- HDD - HORIZONTAL DIRECTIONAL DRILLING
- I.E. - INVERT ELEVATION
- LS - LAND SURVEYOR
- MHW - MEAN HIGH WATER
- MHHW - MEAN HIGHER HIGH WATER
- MLLW - MEAN LOWER LOW WATER
- MLW - MEAN LOW WATER
- OHWM - ORDINARY HIGH WATER MARK
- PVC - POLYVINYL CHLORIDE
- R.O.- REVERSE OSMOSIS
- SD - STORM DRAIN
- SS - SANITARY SEWER
- SSMH - SANITARY SEWER MANHOLE
- STA - STATION
- TYP - TYPICAL
- YD - YARD DRAIN

SURVEY NOTE & CERTIFICATION

THIS PERMIT SET IS A COMPILATION OF A NUMBER OF INDEPENDENT DATA SETS WHICH INCLUDE FEDERAL, STATE, AND LOCALLY AVAILABLE RECORD DATA, REMOTELY SENSED DATA (Lidar), AND DATA PREPARED SPECIFICALLY FOR THIS PROJECT.

SPECIFIC SURVEY WORK TO DATE HAS INCLUDED THE REFERENCED BATHYMETRIC DATA ALONG THE CABLE ROUTE PREPARED BY TETRA TECH BETWEEN AUGUST 8 AND SEPTEMBER 15, 2022. DATA AND REPORTS WERE STAMPED UNDER SEPARATE REPORT PREPARED FOR SAID INFORMATION.

CERTIFICATION HEREON IS LIMITED TO THOSE TERRESTRIAL (UPLAND) AREAS OF HAT ISLAND WERE THE SUBJECT OF TOPOGRAPHIC SURVEY AND MAPPING BY HARMSEN LLC IN DECEMBER AND JANUARY OF 2019. IN ADDITION, SELECTED HORIZONTAL AND VERTICAL CONTROL POINTS AT THE PORT OF EVERETT SITE WERE VERIFIED BY HARMSEN PRIMARILY AS THEY PERTAINED TO TO EASEMENT DESCRIPTIONS AND LOCATIONS AS SHOWN ON SHEET P6. SURVEY WORK WAS CONDUCTED IN MAY OF 2023. AT SUCH TIME AS THIS CONSTRUCTION PLANS ARE FINALIZED A RECORDED SURVEY OF THE DNR AQUATIC LEASE WILL BE REQUIRED FOR THE SUBSEA CABLE ROUTE.

